



či ___ žia

o

uo



___ na

ei

è



b ___ ga

è

ie



s ___ di

ei

è



šl ___ ja

o

uo



sk ___ to

ei

ai



g ___ do

au

ai



š ___ ka

uo

o



sr __ gè

ei

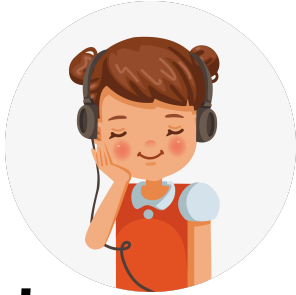
ai



dain __ ja

o

uo



kl __ sosi

a

au



p __ kštis

uo

au



p __ šia

è

ie



k __ nas

ui

ai



d __ žè

ie

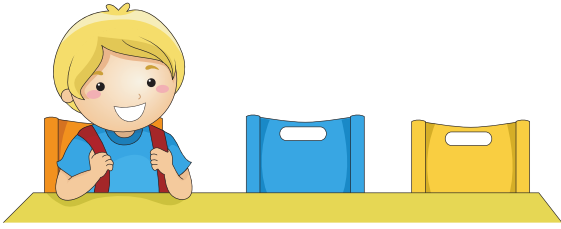
è



š __

uo

o



l __ kia

au

ai



t __ so

ei

ai



j __ kiasi

o

uo



d __ na

uo

au



p __ nas

è

ie



l __ vas

ui

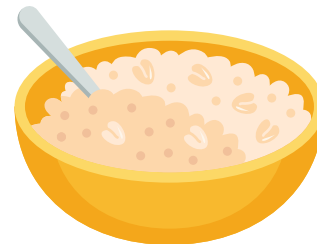
ai



k __ dè

ie

è



k __ šè

uo

o



š __ kštas

au

ai



p __ lis

ei

e



būgn __

ei

ai



j __ ja

uo

o



p __ das

o

uo



z __ kis

uo

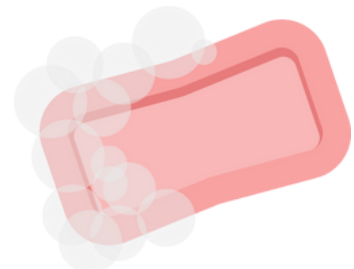
ui



akm __

o

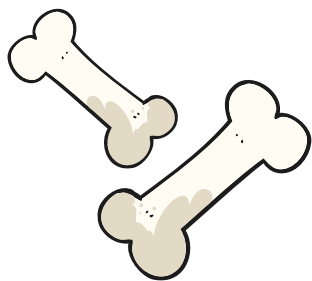
uo



m __ las

uo

ui



k _ lai

au

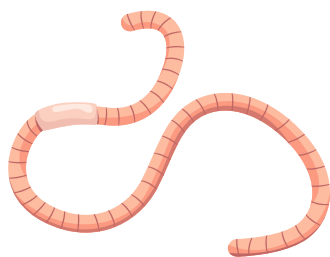
ai



ag _ na

o

uo



sl _ kas

ei

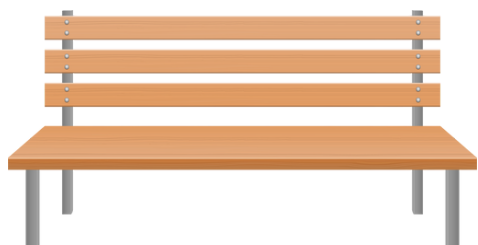
ie



rud _

uo

o



s _ las

o

uo



v _ kas

ai

ui



š _ ma

ei

ie



m _ lè

ei

ie



ž ___ džia

au

ai



m ___ ga

ei

ie



ka ___ m ___ lys

o

uo



ob ___ lys

uo

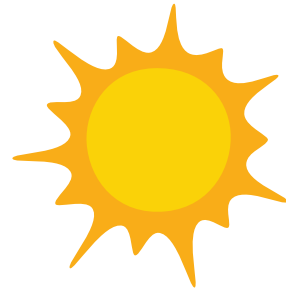
o



sn ___ gè

ai

ie



s ___ lè

uo

au



m ___ šas

ei

ai



l ___ va

uo

o